

□ Hand Down

34 years history of Kayanomi nursery school

- The garden seen from all of rooms:
 - …Nurse can see children from every room
- Free lightning with the skip floor:
 - …The beautiful terrace surround the garden
- The nursery song, Wadaiko, the playroom:
 - …Cultural open space
- A connection to a local area:
 - … Connection with a central focus on Yamabiko
- The traditional school lunch program with achievements:
 - …Cultural and local food
- The sandbox that kids can play even on a rainy day:
 - …The wood deck with an awning
- The slope of playing space:
 - …The stairs and the passages for play
- The fort of the garden and the three-dimensional playing space:
 - …To the climbing wall to the garden
- Electronic authentication security:
 - …The outdoor gate locks are all certification security.
- Flowers:
 - …Flowers surround the entrance

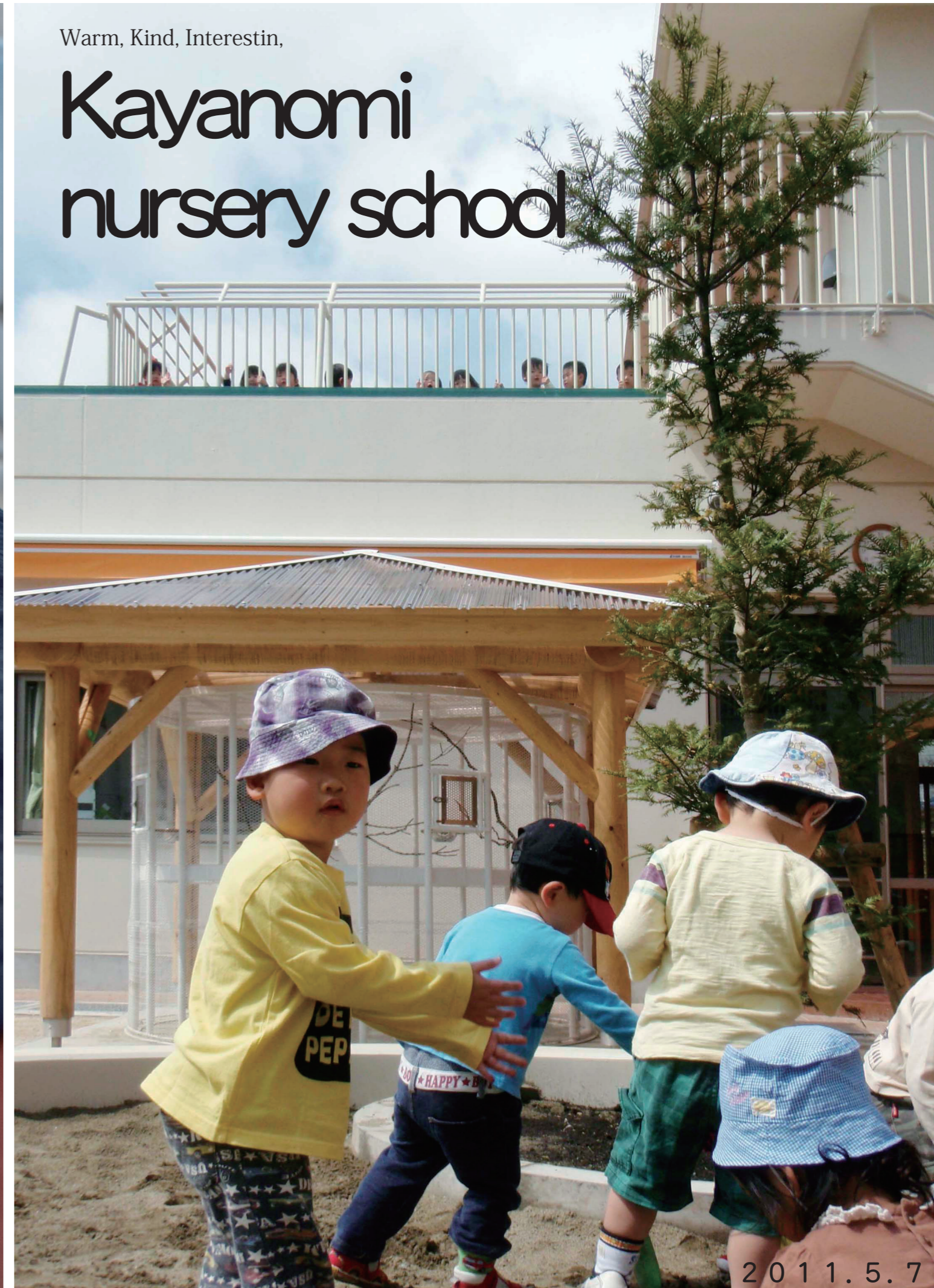
New spaces and equipment

- The playing space:
 - …The playing space on the rooftop
- A secure:
 - …Natural lumber and paint, plastered wall
- Warming:
 - …Solid board, floor heating using night power
- Interesting:
 - …A biotope in the garden, the dug out log on the rooftop
- A relief:
 - …The impediment removal and the elevator
- Ecology:
 - Solar power, wind power generation, and reuse of the rainwater
 - The fluorescent tube with lightning control and the LED lamp

The new nostalgic place

Warm, Kind, Interestin,

Kayanomi nursery school



The warm touch of wood and mortar



▣ The wood deck:

The first floor and the second floor are the terrace of wood deck to feel the warm of wood. The material is afzelia native to South Africa. It is an only natural deck material which is hard to come out of the splinter. For that reason 1 year old kids can walk by bare foot.



▣ The condition in the school:

We have the natural beautiful wooden flooring of Shiba-kuri. The wainscot is natural Hinoki. The walls are plastered. We do not use artificial materials as possible to produce the suitable place for children's growth. Therefore, its not harmful for the bodies and you can feel the warm touch. In addition to the fluorescent tube with lightning control and LED lamp, we also have the Ozone generating device on the ceiling and it keeps condition in the school comfortable healthful.

living place

2 かい



2 かい



▣ The terrace for 2 years old infant:

There is the exclusive wood deck terrace in front of this room, and it is connected to the infant room.

The side of the garden, there is the passage with orange pillars and the dry mist. And it is connected to the deck of infant room. You can play with kids through this passage.

▣ The room for 2 years old infant:

This room is called Usagi, placed by the side of the southeast of the second floor. The exclusive wood deck, with the dry mist, provides comfort in summer. You can see people using Ome line through the window.

Besides, you can see the stairs open space and the room of 3,4,5 years kids at one time. There is an eye connection of 2 years old kids, stairs, and other infants.



▣ The garden:

One of the characteristics of the old nursery school building is the large sandbox that kids can play even on a rainy day. However, this time the sandbox got smaller, and kids cannot play on a rainy day. Instead, we put a symbol tree and a Kaya tree in the sandbox. Furthermore, a henhouse with 2 levels, a biotope, and the field surround the sandbox. And there are another henhouse and the climbing wall in the garden.



▣ The room for 1 year old infant:

This room is called Risu, placed by the side of the southeast of the first floor. Full Tatami mats cover this room. Kids who belong to this class can play with 0 year old kids on the wood deck in the southwest.

There is the wood deck in the northwest facing the garden. Pillars and an awning are colored by orange, and that color symbolize Kayanomi. You can play with children here.



▣ The room for 0 year old infant:

This room is called Hiyoko, placed by the side of the southwest of the first floor.

No window on the west side wall, an big lighting with an electric window shade and an louver.

Kids who belong to this class can play with 1 year old kids on the Tatami space and the wood deck.

▣ The field faces to a stare:

There is a slope connected to the second floor from the entrance in the old nursery school building. Even a wheelchair and a crutch can move to the second floor. Moreover this place is so useful for exhibition space and a sports day of kids.

Unfortunately, this time we couldn't use this slope because of Tokyo regulation. Instead, We designed new stair field, and made it an interesting circle space that is able to play with 2 years old kids. It connects to the wood deck passage.



☐ The Kurumi room:

This is the multipurpose space for infants to paint or make something.

We use this place as a birthday party room, to sing the nursery songs called Warabe-uta and teach arts. The closets surround the room, and they have the magnet white board on each doors. We can display many things and paint something with a non-permanent marker pen



☐ The Kurumi room:

This is the multipurpose space for infants to paint or make something.

We use this place as a birthday party room, to sing the nursery songs called Warabe-uta and teach arts. The closets surround the room, and they have the magnet white board on each doors. We can display many things and paint something with a non-permanent marker pen



☐ The climbing wall of the garden:

There is the climbing wall designed for infant in the garden. The degrees of difficulty are different by each part of the stone on the wall. It is designed to be able to enjoy at wide age. Kids can chose more high level when their technique improves.

Until now, the fort was a symbol of children's challenge spirits in Kayanomi nursery school, now this climbing wall becomes to bring up children instead of it.



☐ The terrace of wood deck:

There are the terraces of wood deck

on the first and second floor. On the first floor, go along in front of the stairs hall from the room of 1 year old infant, you can see the entrance hall. There is the infant room on the second floor, and you can see the room of 2 years old infant from through in front of the stair hall. The passage brings you from the room of 1 year old infant to the entrance hall.

☐ The rooftop:

This it the ground covered by the water permeable rubber tip which is generally used for tennis court, poolside, stadium and school ground. Therefore everyone can play with bare foot.

We put the pool and the dug out log to have kids enjoy playing. Including the wood deck of the first floor and the second floor, you can enjoy the scene three-dimensionally.



The interesting

ごあん



1かい

☐ The Yamabiko room:

This is the multipurpose hall. We use this room for the local support project and Wadaiko circle. Neighboring parents and children who have not yet entered Kayanomi nursery school can experience how this nursery school is. This project called Hanaichimonme, and we do it at this room. Moreover, in conjunction with an entrance hall and a kitchen, we can also use this place as other various events.



☐ Solar power:

Solar power is the clean system that generates no CO2 at the time of power generation. If the company which introduces solar power increased, we can cut down the output of CO2, and it helps well to protect the global environment.

The reduction amount of CO2 is displayed at any time on the monitor set on the entrance of Kayanomi nursery school.

Furthermore, the data of solar power is used to gather the data of Green electric power fund, and also used to expand natural energy from now on.



☐ The thermal storage type floor heating by using nighttime electric power:

The thermal storage type floor heating uses the cut-price electric power at nighttime, and use the heat accumulated at nighttime tomorrow

for heating. The floor heating is comfortable heating that heads are cold and feet are hot. Moreover, it warms up thoroughly even the wide space or the whellhole style. There is no discomfort like to be exposed to hot or warm current air.

Furthermore, it offers high safety because of disuse of the fuel combustion. Therefore, no accident happens like fire accidents, lack of oxygen, CO2 and the gas poisoning. Also, it doesn't come out the exhausted gas so it's hygienic. It doesn't dry air, and keeps the room comfortable.

☐ Reuse of rainwater:

Rain is permanent resource that we can have everywhere in Japan. In these days, we have a lot of intensive rain and it imposes a burden on sewer very badly. We store this rainwater to the underground tank temporally, and use it for a chore.

Because of a water shortage, a Hamura city hall asks us to save water in summer and we try to do it. Rainwater is precious water resource. Reuse of rainwater gives children opportunity to think about the importance of water resource.

Rainwater in the tank uses for flowerbeds, fields, a biotope and sprinkling water for the garden. In case of an emergency or disaster, we also use it as a chore.

Eco-friendly

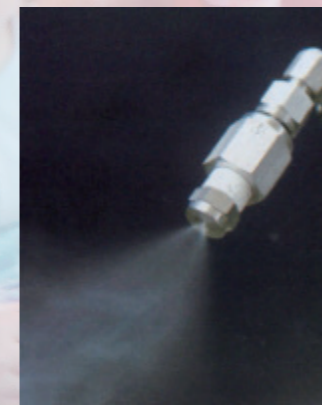
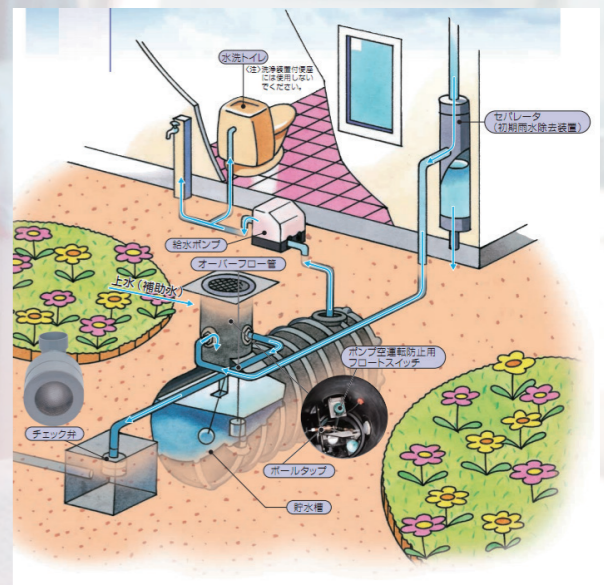


☐ Wind power generation:

In these days the interest in the global environment increase, and the expectation to wind power generation as the environment education increase as well.

In Kayanomi nursery school, we use wind power generation for not only as saving energy and an emergency power source but also to the experience education of wind and sun.

Furthermore, the data of wind power generation is used to gather the data of Green electric power fund, and also used to expand natural energy from now on.



☐ The dry mist:

The dry mist is the cooling device mainly used for a limited area on the ground. It emits a jet of water which was changed to be minute fog and make the ground cool by using the absorption of heat of vaporization at the time of evaporation.

A particle of rain is so small, so it evaporates quickly and doesn't make clothes and skins wet.

The dry mist can lower temperature by 2 to 3 degrees, and it is said that the energy consumption

is one-20th of the home air-conditioner. In these days, it is used for compatibility of eco-friendly and making comfortable space in ordinary homes, the office building, schools, arcades and public squares.

Kayanomi nursery school has had a nozzle of the dry mist and reduce the amount used of air-conditioner and provide comfort to act in summer. The nozzle surrounds the deck to the Kurumi room through a passage in front of the room for 2 years old infant.

☐ The Basic design concept :

The Kayanomi tradition succeeded.
And it comes new!

• Space of the reliable security:

- The impediment removal
- Earthquake-proof, fireproof, and disaster prevention
- Full space of a nursery
- Combine the nursery room and the cafeteria.

• The nursery school with town:

- Space opened to a local area
- Eco-friendly system



1977.1.1~2010.5.31

☐ School building

Lot area : 789.00㎡
Total floor space : 856.73㎡
Total Capacity: 110members
(12 members for 0 years old, 18 members for 1 years old, 20 members for 2 years old)

• Design and construction: Sho-chiiki sekkei Co.

• Construction: Ishikawa kensetu Co.

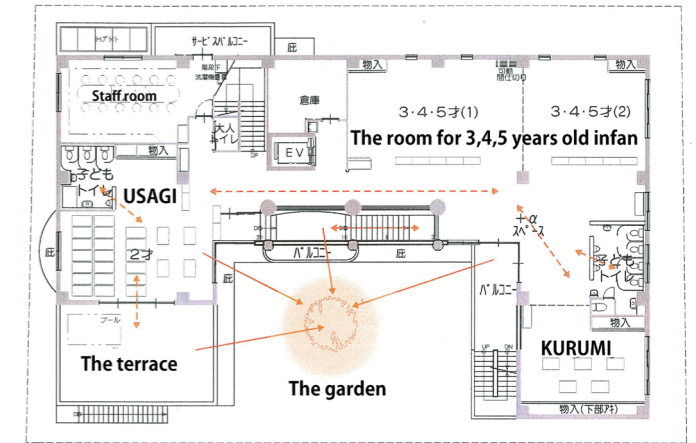
• Construction expense

Design and supervision: 20,601 thousand yen
Construction: 228,879 thousand yen
※ For temporary nursery school building sundry expense and kids
※ Not including chairs, tables, and play equipment
Total amount: 327,685 thousand yen



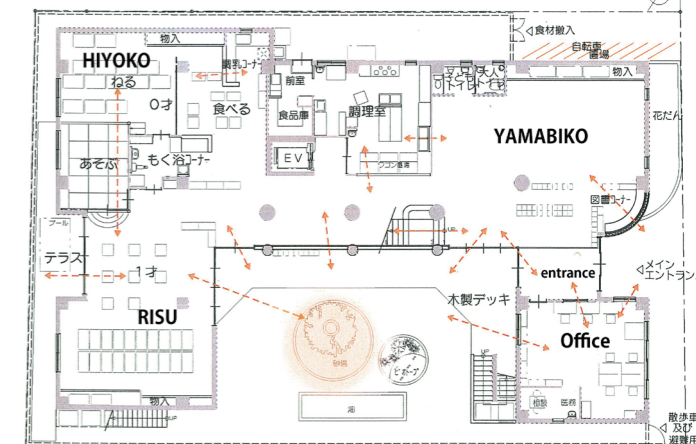
2011.4.1~

■ Relation of a look



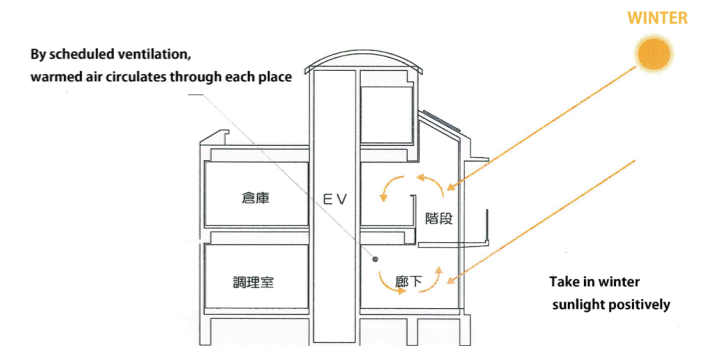
● 2階平面図 (1/200)

Relation of a look

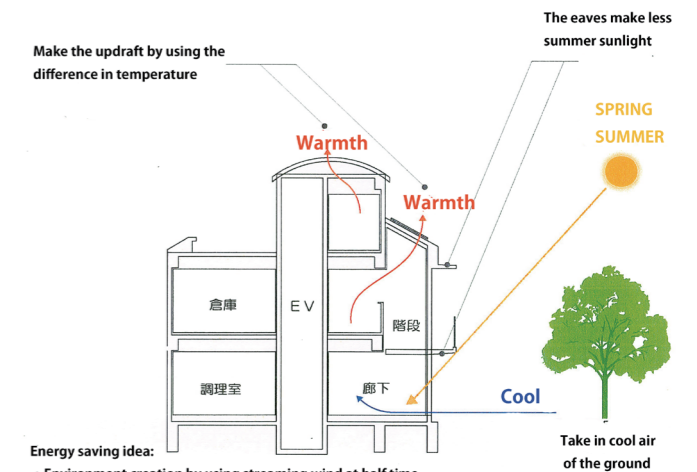


● 1階平面図 (1/200)

■ THE FLOW OF AIR



Energy saving idea:
A concept of the passive solar Use natural light positively



Energy saving idea:
• Environment creation by using streaming wind at half time
• Release the accumulated hot air to the atmosphere